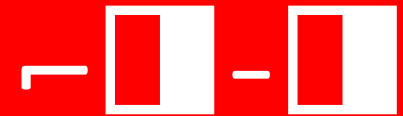


# NOGGLES RAIL DIY GUIDE



Cover photo: Fernando Menezes Jr.



Cover photo: Fernando Menezes Jr.

# Nouns & Gnars

# SUMMARY

<input type="checkbox"/> HISTORY	1
<input type="checkbox"/> CONCEPT	2
<input type="checkbox"/> 3D VIRTUAL MODEL	3
<input type="checkbox"/> HOW TO BUILD	4
<input type="checkbox"/> PICTURES	9
<input type="checkbox"/> CREDITS	11

Though I still don't know much about it yet, in 2022 I began to learn more about web 3.0. Back then, through my friend Vlad, I heard about cryptocurrencies, DAOs, the Skate Hive, Nouns and Gnars communities.

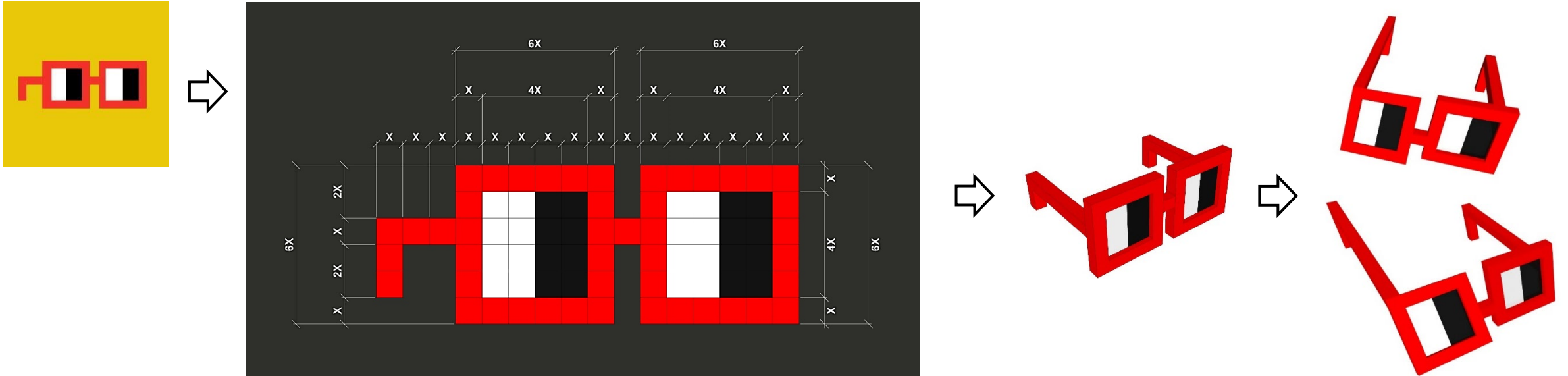
Then, one day, **I had the idea to turn the Nouns logo into a skateable sculpture**. In just one night, home alone on my computer, smoking a joint, drinking wine and listening to rock and roll, the idea magically (but not so quickly) took shape in Sketchup.

After that, I showed it to Vlad and the members of Coletivo XV, and everyone loved it. We were at the time seeking funding for the 13th I Love XV event in Rio de Janeiro, and one of the attempts was through a proposal in Nouns. The **NOGGLES RAIL** project was crucial for the approval of our proposal, whose funding made I Love XV 2022 real.

However, I had no idea that after the event, the inauguration of the sculpture, all the tricks, and the wonderful party that took place, the obstacle would become so famous and celebrated among members of web 3.0 communities worldwide.



So, **as a thanking, I made this manual to help anyone who wants to build their own NOGGLES RAIL with the quality it deserves**. Thank you to every person who's part of this decentralized universe and believes that the digital and real world can be built by everyone in a more anarchist and horizontal way, creating alternatives to what's offered by the mainstream, big techs and the *status quo*. Thank you very much!!! Long live DAOs and alternative 3.0 communities!



The concept of **NOGGLES RAIL** is quite simple: **to bring into three-dimensionality a visual identity that originated in the two-dimensionality of the pixel world**. And with it, to bring the questioning: **- Through what lenses do skateboarders see the world, and especially skateboarding, today?**

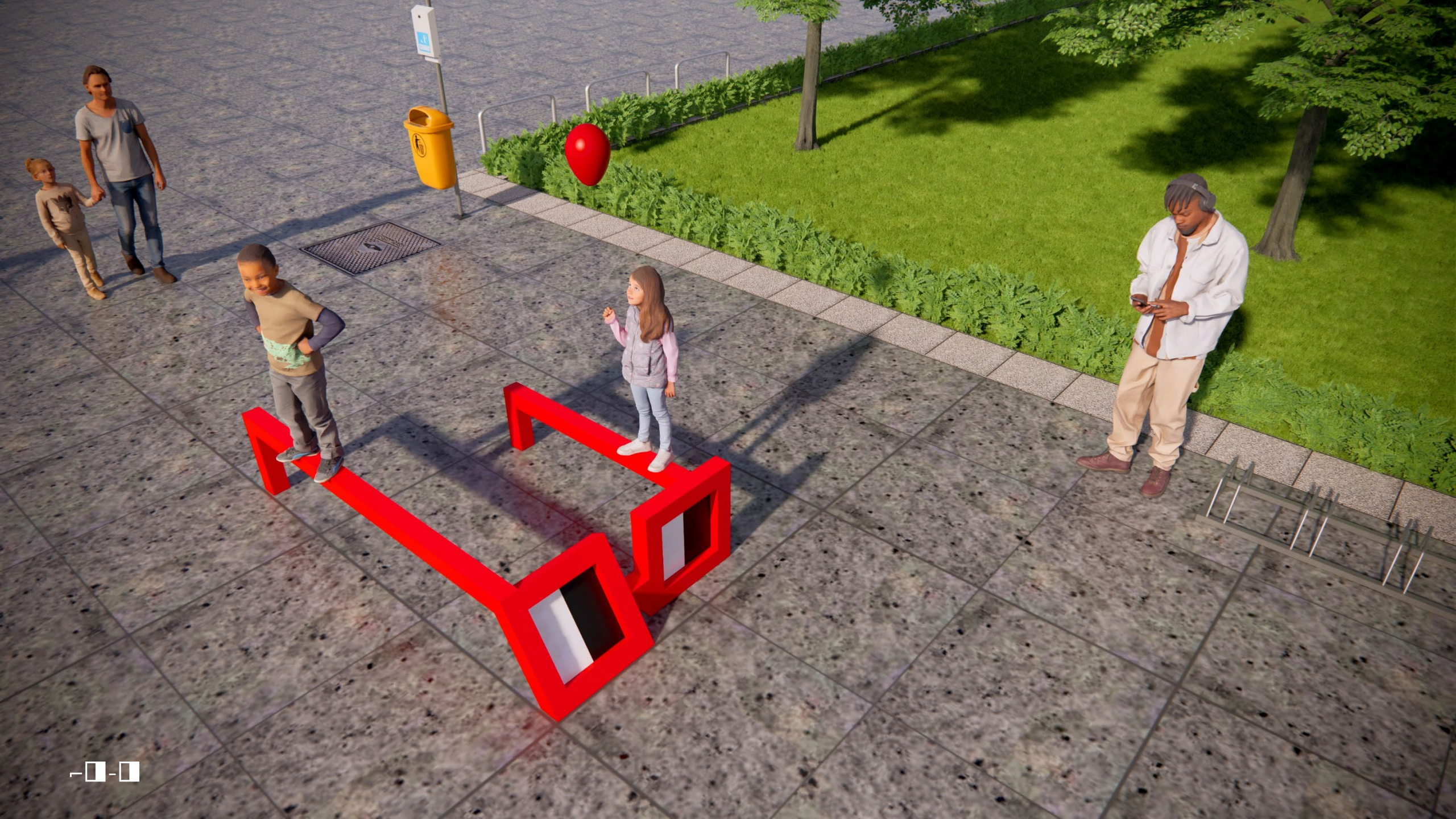
The fact that the Nouns logo is pixel-based automatically creates a specific relationship between the measurements of its design. The first step was to study this proportion, still in the two-dimensional plane, understanding the number of pixels that make up the design, as shown in the main image above.

The second step was to define a scale so that the sculpture could be used as a skate obstacle. Thus, each pixel was assigned a measurement.

**| X=0,1m | ou | X=10cm |**

The third and final step was to give volume to the image, **transforming pixels into cubes and then deconstructing its shape**. Rigidity and symmetry gave way to fluidity and asymmetry without altering the balance of proportions, creating a movement in the piece that encourages skaters to try as many tricks as possible, using their creativity.



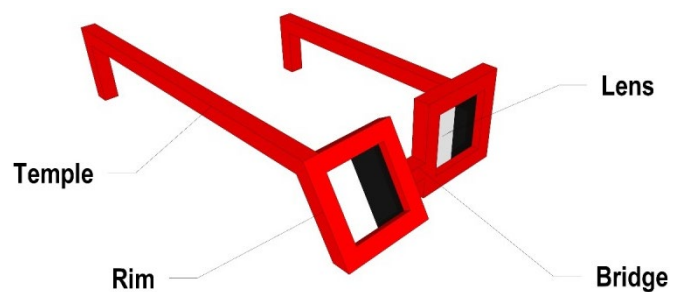
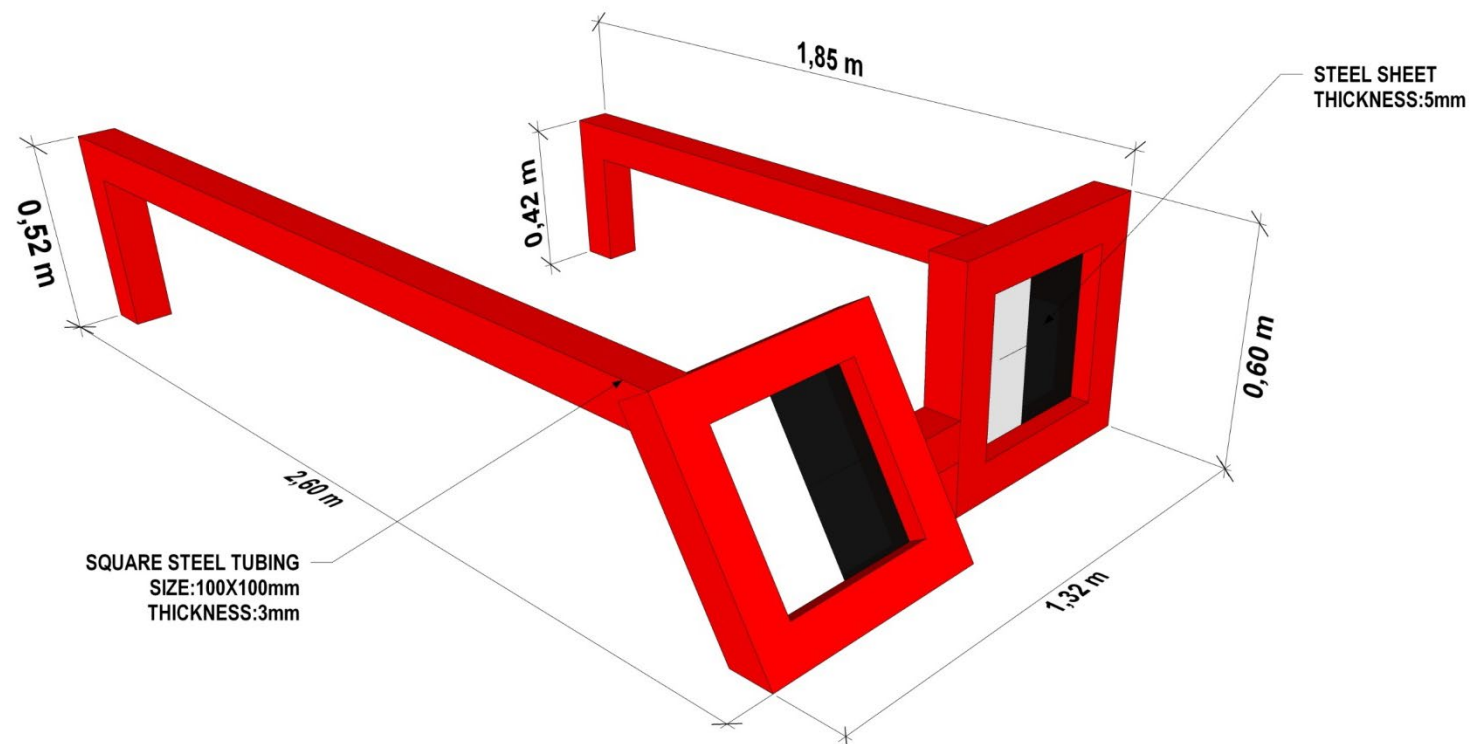




## HOW TO BUILD YOUR NOGGLES RAIL - OVERVIEW

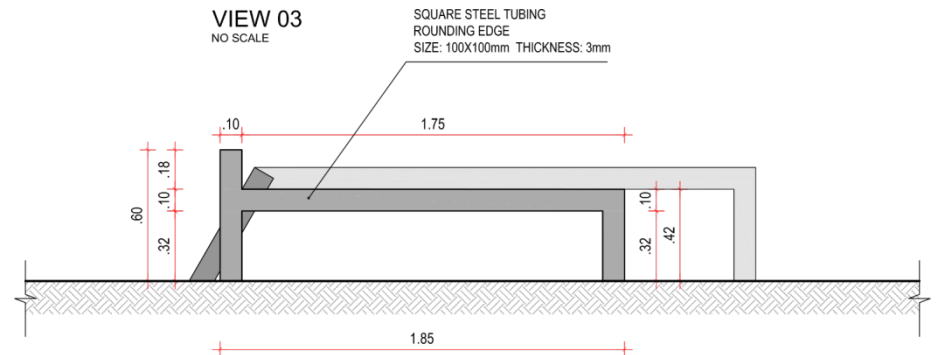
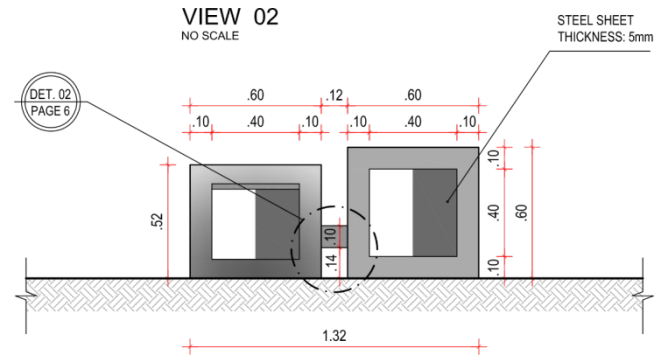
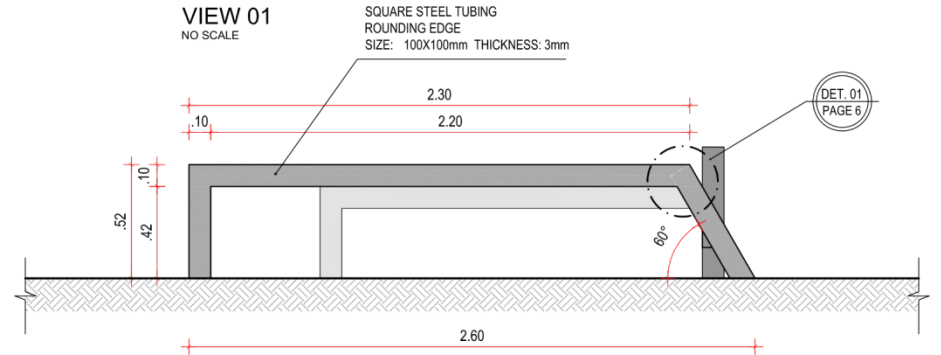
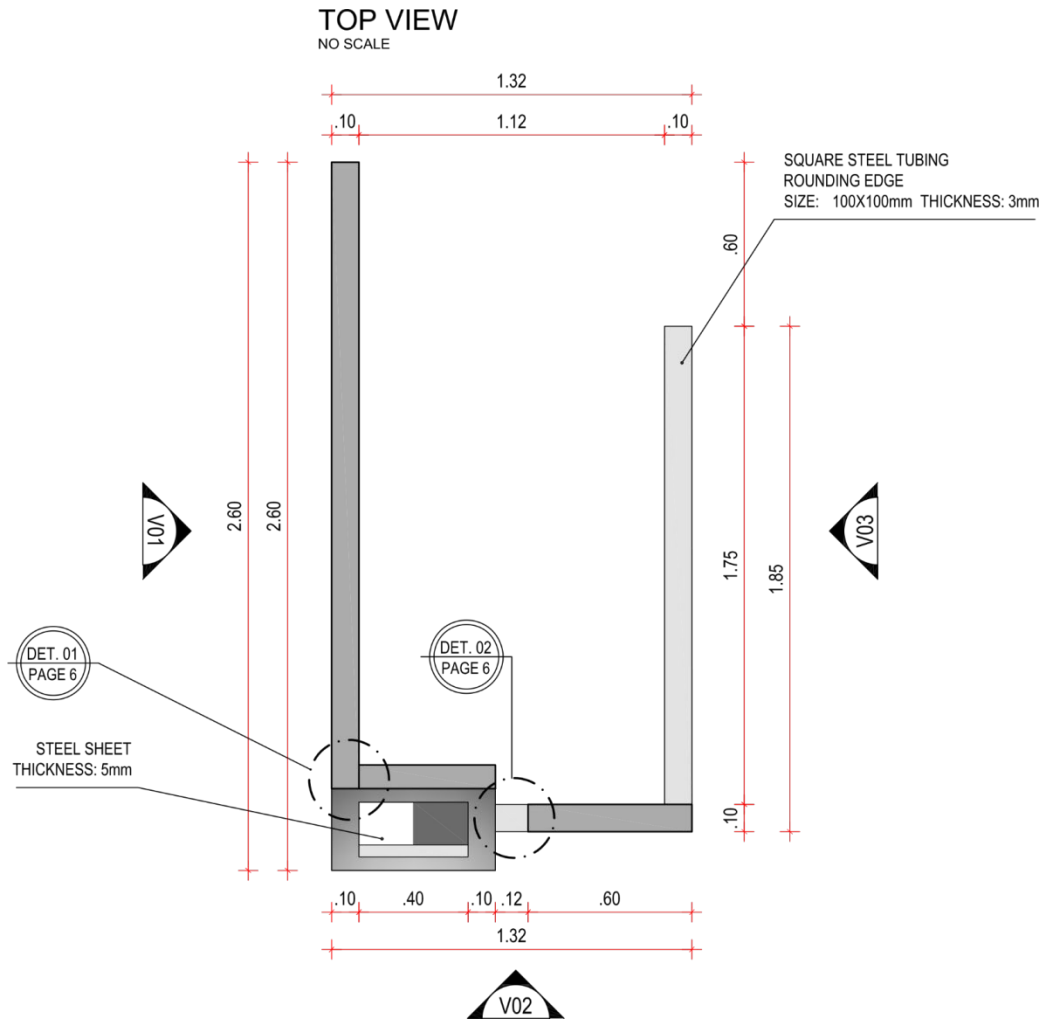
Now you'll learn, step by step, how to build your **NOGGLES RAIL**.

It's very important **to follow the instructions correctly, and respect measurements and material indications**. Pay attention to the tips about some construction details!



ALL DIMENSIONS ARE IN METERS!

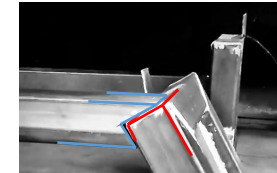
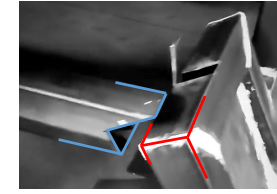
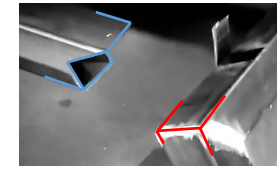
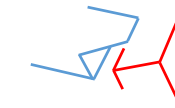
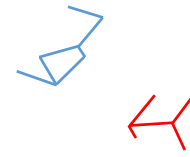
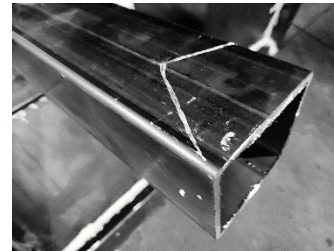
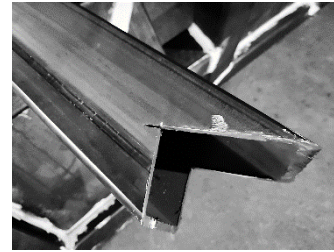
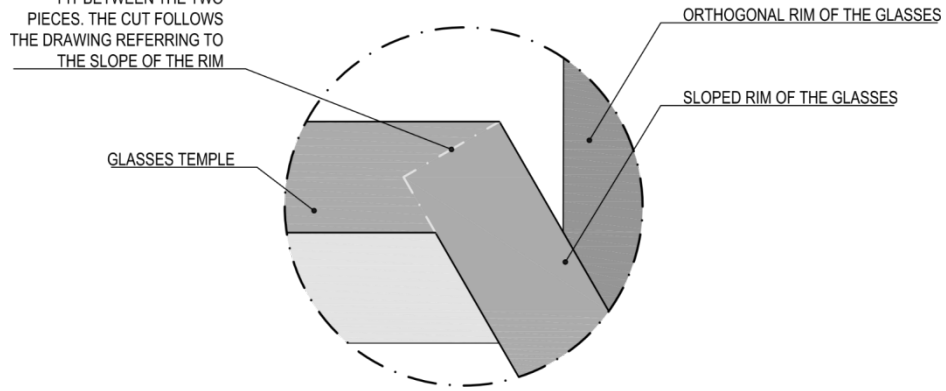




DETAIL 01 - TEMPLE/RIM CONNECTION

NO SCALE

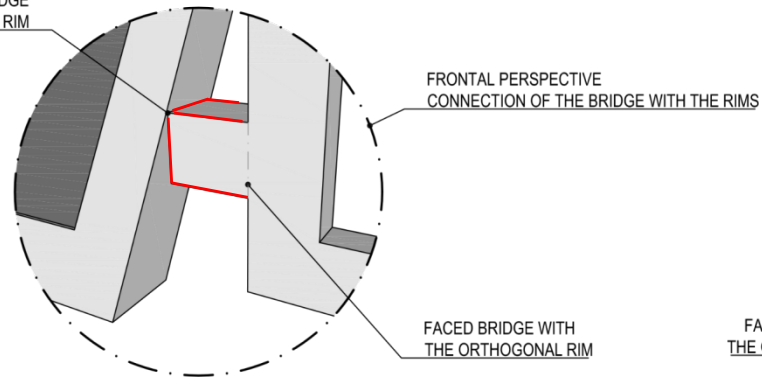
CUT ON THE SIDE ARM OF THE GLASSES FOR PROPER FIT BETWEEN THE TWO PIECES. THE CUT FOLLOWS THE DRAWING REFERRING TO THE SLOPE OF THE RIM



DETAIL 02 - BRIDGE/RIM CONNECTION

NO SCALE

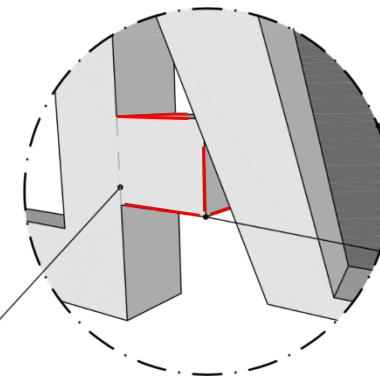
TOP VERTEX OF THE BRIDGE FACED WITH SLOPED RIM



BACK PERSPECTIVE CONNECTION OF THE BRIDGE WITH THE RIMS

LOWER VERTEX AND SIDE FACE OF THE BRIDGE PROTRUDING OUTWARD FROM THE SLOPED RIM

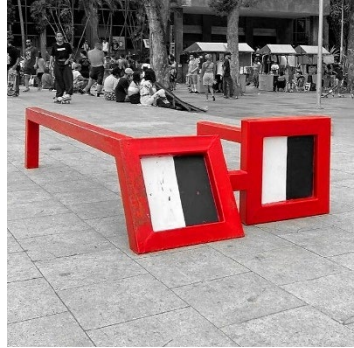
FACED BRIDGE WITH THE ORTHOGONAL RIM



## HOW TO BUILD YOUR NOGGLES RAIL - TIPS

### SITE

Your **NOGGLES RAIL** is, above all, a **sculpture and a work of art!** Therefore, choosing the location where it will be placed is very important. Prefer places where it can stand out. In my opinion, on the street is always cooler than in the skatepark, but the most important thing is to build it correctly and skate it. It's essential to choose a location with a flat and well-finished floor so that your **NOGGLES RAIL** doesn't risk being wobbly and unstable.



### WELDING AND SQUARELESS

A well-executed weld is very important for the durability of your **NOGGLES RAIL**. Make sure the weld is continuous, without holes, covering the entire length of the connections between the steel pieces. Also, be sure to check the squareness between the pieces before starting the weld, so that your **NOGGLES RAIL** has all orthogonal connections well executed and doesn't risk being wobbly and unstable.



### PAINTING

Always prefer paints that already have protective and anti-corrosive factors in their composition. Apply at least two coats of paint, but ideally three. And always perform paint maintenance at least twice a year on your **NOGGLES RAIL**.



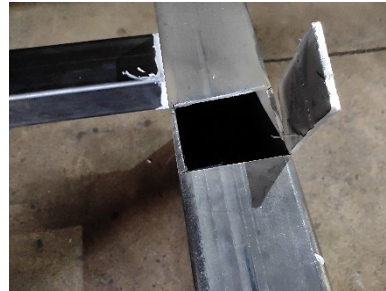
### LENS

In the design and execution of the first **NOGGLES RAIL**, the plate forming the lenses is centered in relation to the rims. This depth brings more fidelity to the figure of glasses. However, after the sculpture was inaugurated, many skater friends suggested that if the lenses were flush with the front of the rims, it would create more maneuvering possibilities and also facilitate others. So, the suggestion, **only for the lenses**, is that everyone does as they see fit, after weighing between aesthetics and functionality.



### CONCRETE

The first **NOGGLES RAIL** was placed in the street, at Praça XV de Novembro, Downtown Rio de Janeiro, Brazil. Other skateable furniture previously installed in the area was stolen, as they were small/medium-sized and made of steel, a material with some value for sale. To avoid new problems of this kind, the square steel tubing of the piece were filled with concrete, significantly increasing its weight and making it difficult/impossible for people to take it away. Additionally, the sculpture gains in strength and durability.











Produced by:  
**PHARRÁ BUARQUE**

[@pharraxv](https://www.instagram.com/pharraxv)

55 21 99484 9500

[pharrabuarque@gmail.com](mailto:pharrabuarque@gmail.com)



TANG  
ENTE

[tngskateparks@gmail.com](mailto:tngskateparks@gmail.com)

[@tangente\\_skateparks](https://www.instagram.com/tangente_skateparks)

Big thanks to:



**Coletivo XV**

[@coletivoxv](https://www.instagram.com/coletivoxv)

**Arcos Cenografia**

[@arcoscenografia](https://www.instagram.com/arcoscenografia)

Jackson Bahia (Tangente D.I.Y. Skateparks)